



# FLEX-ING® COMPOSITE ACCESS COVERS

At a fraction of the weight of typical steel access covers, a single technician can easily remove the lightweight FLEX-ING® composite access cover.

## HIGHLIGHTS

- Slip resistant covers are constructed of many layers of high quality fiberglass bonded together with premium resin and then hand finished with the utmost attention to quality.
- At their center, our composite access cover tapers up from 1" to 1-1/4" in wall thickness while most competitive models remain at a uniform 1" wall thickness. The extra wall thickness provides minimal deflection and an extended service life.
- A shallow handle hole and chest-style handle with backer plate keep the wall thickness higher around this high-impact area of the cover.

## ORDERING INFORMATION

### Composite Access Cover

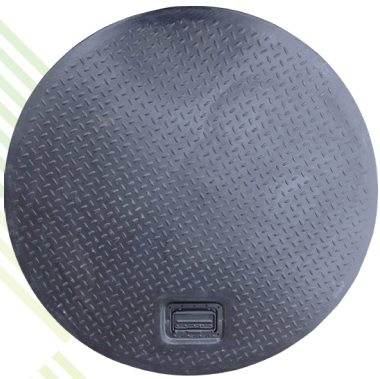
Model	Description
14U-3810	39" composite cover with 37" x 10" skirt
14U-RT3810	39" raintight composite cover with 37" x 10" skirt
14U-RT3810CL	39" raintight composite cover with 37" x 10" skirt and cam locks
14U-RT3810CLC	39" raintight composite cover
14U-3810C	39" composite cover
14U-4210	44" composite cover with 42" x 10" steel skirt
14U-RT4210	44" raintight composite cover
14U-RT4210CL	44" raintight composite cover with 42" x 10" steel skirt and cam locks
14U-RT4210CLC	44" raintight composite cover with cam locks
14U-4210C	44" composite cover

## SPECIFICATIONS

- Exceeds H20 and HS20 load standards (maximum axle load requiring support for the 32,000, or 16,000 pounds for each set of dual tire wheels).
- Available with solid construction cast Zn-Al-Mg alloy, slope-style cam locks for the ultimate in watertight sealing.
- 12 gauge skirt construction that is also powder coated for extreme protection.
- 38" and 42" come standard with spring loaded handle and are available with cam lock for raintight seal.

### Dimensions

Model	Diameter	Lid Thickness	Frame ID	Skirt Height	Skirt ID	Opening
38"	39.00"	1.00"	39.25"	10.75"	37.00"	36.25"
42"	44.00"	1.00"	44.25"	10.75"	42.00"	41.25"



# COMPOSITE ACCESS COVERS REPLACEMENT PARTS

FLEX-ING® brand composite access cover replacement lids give you all the benefits of the solid cover for use with existing, competitive rings. Simply measure the dimensions of the existing manhole ring to determine the appropriate replacement lid. Comes standard with spring loaded handle.

## ORDERING INFORMATION

### R Line Composite Access Replacement Lid Replaces OPW Conquistador™ Lids

Model	Description	A		B	
		In	cm	In	cm
14U-39R	39" R Line replacement lid	39.3 +/- .125	100.01	1.00	2.54
14U-44R	44" R Line replacement lid	44 +/- .125	112.07	1.00	2.54

### MoreCore Composite Access Replacement Lid Replaces Morrison Bros. Lids

Model	Description	A		B		C	
		In	cm	In	cm	In	cm
14U-39MOR	39" MoreCore replacement lid	38.75	98.40	1.75	4.4	1.25	3.2
14U-44MOR2	44" MoreCore replacement lid	44.88	114.00	2.17	5.51	1.25	3.2

### Composite Access Replacement Handle Kit

Complete chest handle replacement kit includes handle, back plate, two bolts, two nuts, and an allen wrench.

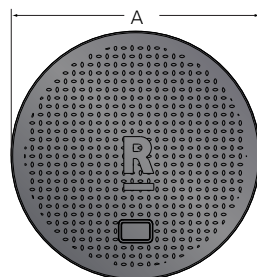
Model	Description
HANDLE KIT	Replacement handle kit

### Composite Access Replacement Gasket Kits

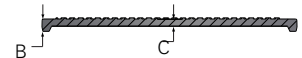
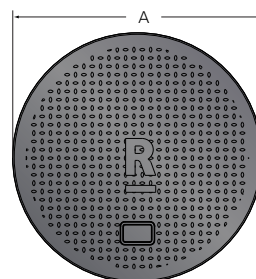
Replacement gasket kit includes enough gasket material for a 42" lid. Cut to desired length for other lid sizes.

Model	Description
BOLT KIT	Replacement gasket and bolt kit for bolt-down style lids (includes gasket material and four bolts)
NONBOLT KIT	Replacement gasket kit for non bolt-down (lay in and cam lock) style lids (includes gasket material only, 12' roll, 3/8" wide x 1/8" deep)
CAMLOCK	Replacement gasket and hardware for cam lock style lids (includes four cam locks, with nuts, four bolts, four O-rings, and gasket material)

R Line Replacement Lid



MoreCore Replacement Lid



**Franklin Fueling Systems**

franklinfueling.com  
 3760 Marsh Rd. • Madison, WI 53718, USA  
 Tel: +1 608 838 8786 • Fax: +1 608 838 6433  
 Tel: USA & Canada +1 800 225 9787 • Tel: UK +44 (0) 1473 243300  
 Tel: Mex 001 800 738 7610 • Tel: FR +33 (0) 1 69 21 41 41 • Tel: CH +86 10 8565 4566



OPW Conquistador™ is a trademark of Dover Fueling  
 © 2019 Franklin Fueling Systems. All Rights Reserved.

FFS-0715 07-19